

**2022-2023**

---

**COVID-19  
HEALTH &  
SAFETY  
GUIDELINES**

**LAST UPDATED:**  
August 5, 2022



## E.L. HAYNES

COVID-19 continues to impact our community in many life-changing ways. As our public health environment evolves, we ask for your partnership in keeping our learning community as healthy as possible.

## COVID-19 HEALTH & SAFETY GUIDELINES

To help limit the spread of COVID-19 and prioritize safe, in-person learning, we refined our procedures to keep our students, families, and staff as healthy as possible.

## GOALS & OBJECTIVES

We use these principles to guide our decision-making throughout the pandemic.

- 01** Champion health and safety
- 02** Be adaptive
- 03** Protect our mission
- 04** Keep relationships close
- 05** Communicate intentionally



# OUR MULTI-LAYER APPROACH

To help limit the spread of COVID-19, we will use multiple layers of protection.



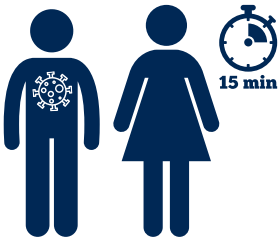
MASK-WEARING



VACCINES & BOOSTERS



ASYMPTOMATIC TESTING



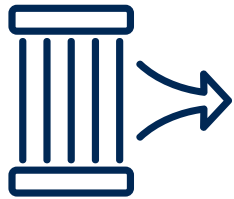
CLOSE CONTACTS & SOCIAL DISTANCING



TEST TO STAY PROGRAM



CONTACT TRACING



AIR FILTRATION AND CLEANING





**MASK-WEARING**

At the start of the 2022-2023 School Year, **everyone** must wear masks, regardless of vaccination status, while indoors.

- We have extra masks and other PPE available if you need them.
- In some situations, students and staff are required to wear masks outdoors.

**DO choose masks that...**

- have two or more layers of washable, breathable fabric
- cover your nose completely
- fit snugly against the sides of your face and do not have any gaps
- have a nose wire to prevent air from leaking out the top of the mask

**DO NOT choose masks that...**

- are made of fabrics that make it hard to breathe
- have exhalation valves or vents, which allow the virus to escape
- are gaiters or bandanas



We strongly encourage **all students** to get vaccinated and boosted, if they are able to do so.

**VACCINES AND BOOSTERS**

- **Beginning in SY 2022-23, all students ages 12 and up must be vaccinated against COVID-19.**
- At E.L. Haynes, all staff must be fully vaccinated against COVID-19, including receiving the appropriate booster dose.
- For up-to-date information about who the vaccine and booster is safe for, visit [coronavirus.dc.gov](https://www.coronavirus.dc.gov).
- All DC residents, 3 and over, can visit any walk-up vaccine clinic throughout Washington, DC. For more information, visit: [coronavirus.dc.gov](https://www.coronavirus.dc.gov).

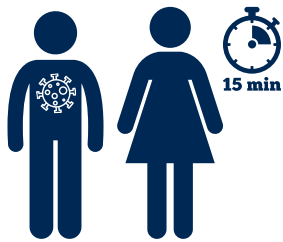


**Unvaccinated staff will be tested weekly. Students or Staff who are identified as close contacts will participate in our Test to Stay Program.**



**ASYMPTOMATIC  
TESTING**

- Staff who received an approved medical or religious exemption from receiving the COVID-19 vaccine will continue to test weekly during the 2022-23 School Year.
- Test results will be shared via email with families and E.L. Haynes within 48-72 hours.



**CLOSE CONTACTS  
& SOCIAL  
DISTANCING**

**Students and staff identified as close contacts can remain on campus with daily COVID-19 testing.\***

**"close contact"**

A student close contact is a student who was within three feet of a person who tested positive for COVID-19 for at least 15 cumulative minutes over a 24-hour period, while that person was infectious. A staff member is considered a close contact if they were within three to six feet of someone who tested positive.

A student is not deemed to have had close contact if:

- both students were engaged in consistent and correct use of well-fitting face masks, and
- other layered prevention strategies were in place (i.e. universal mask-wearing, physical distancing, increased ventilation).



*\*If someone in your household tests positive and you are designated a close contact, you must quarantine.*



**TEST TO STAY  
PROGRAM**

**Our Test to Stay (TTS) program offers shortened quarantine times.**

- Students and staff members who are identified as a close contact can monitor symptoms and participate in daily rapid tests.
- On their fifth day, we will administer a PCR test (unless they are a 90-day positive).
- This program is not available for people who live in the same household as someone who has tested positive for COVID-19.

**"90-day positive"**

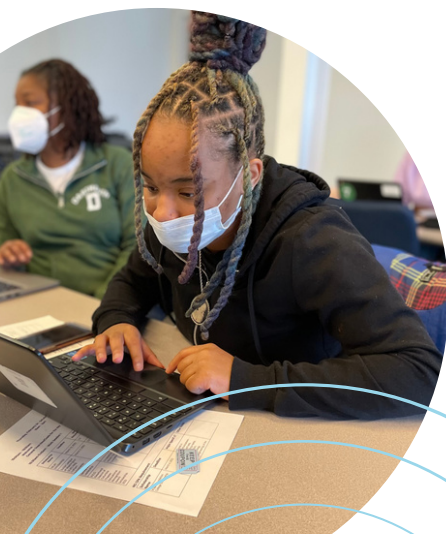
Someone who tested positive for COVID-19 within the last 90 days and who, due to viral shedding, could continue to test positive via a PCR test even after they are no longer infectious or experiencing symptoms.



**CONTACT  
TRACING**

**Everyone must tell E.L. Haynes if they test positive for COVID-19 or are identified as a close contact.**

- If a student tests positive, their family will be informed as the case is referred to DC Health.
- The student will transition to online learning and follow guidance from health officials when to return.
- After notifying all close contacts, E.L. Haynes will send all families at that campus an email alert.

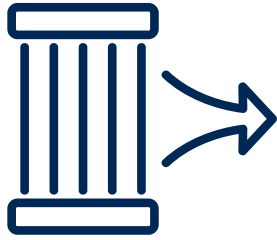


Click here to report  
**positive test results.**



Click here to report a  
**"close contact" identification.**





**AIR FILTRATION AND CLEANING**

**We enhanced our air filtration systems and cleaning processes in ALL classrooms, offices, and other communal spaces.**

- MERV 13 filters in the HVAC system
- Twice-Daily fresh air flushing of HVAC system
- HEPA units in every room
- Open windows and door (when weather permits)
- Cleaning throughout the day
- Nightly cleaning service
- Weekly deep disinfectant cleaning



## COVID-19 SYMPTOMS

A wide range of symptoms have been associated with COVID-19, and symptoms may appear 2 - 14 days after exposure to the virus. Individuals may have mild to severe symptoms, and certain symptoms have been identified as strong indicators of COVID-19. We call these “red flag symptoms.”



- New or worsening cough
- Shortness of breath/difficulty breathing
- New loss of taste or smell
- Fever (above 100.4 degrees Fahrenheit)\*

- .....
- Chills
  - Muscle or body ache
  - Sore throat
  - An unusual amount of tiredness
  - Nausea or vomiting
  - Runny nose or congestion
  - Diarrhea





## If your student experiences symptoms...

### Before arriving at school:

If a student experiences any **ONE red flag** symptom which is unexplained by existing health conditions, they should **STAY HOME** and not enter any school building.

### While at school:

If a student experiences any **ONE red flag** symptom, which is unexplained by existing health conditions, they will be sent to their campus' Health Transition Room to be seen by a healthcare professional.

If the healthcare professional determines that a COVID-19 test is needed, **the student and any siblings will be sent home** and required to get a negative test.





# YOUR CHILD'S EDUCATION AND HEALTH ARE OUR TOP PRIORITY.

We are committed to doing everything in our power to maintain a safe learning environment so that our students thrive.

As guidance changes, we will evaluate and update these guidelines.

## What if I have questions about my child?

For questions about what do if your student tests positive for COVID-19, or is identified as a close contact, contact Evelyn Marquez, COVID-19 Operations Coordinator, at [emarquez@elhaynes.org](mailto:emarquez@elhaynes.org).

